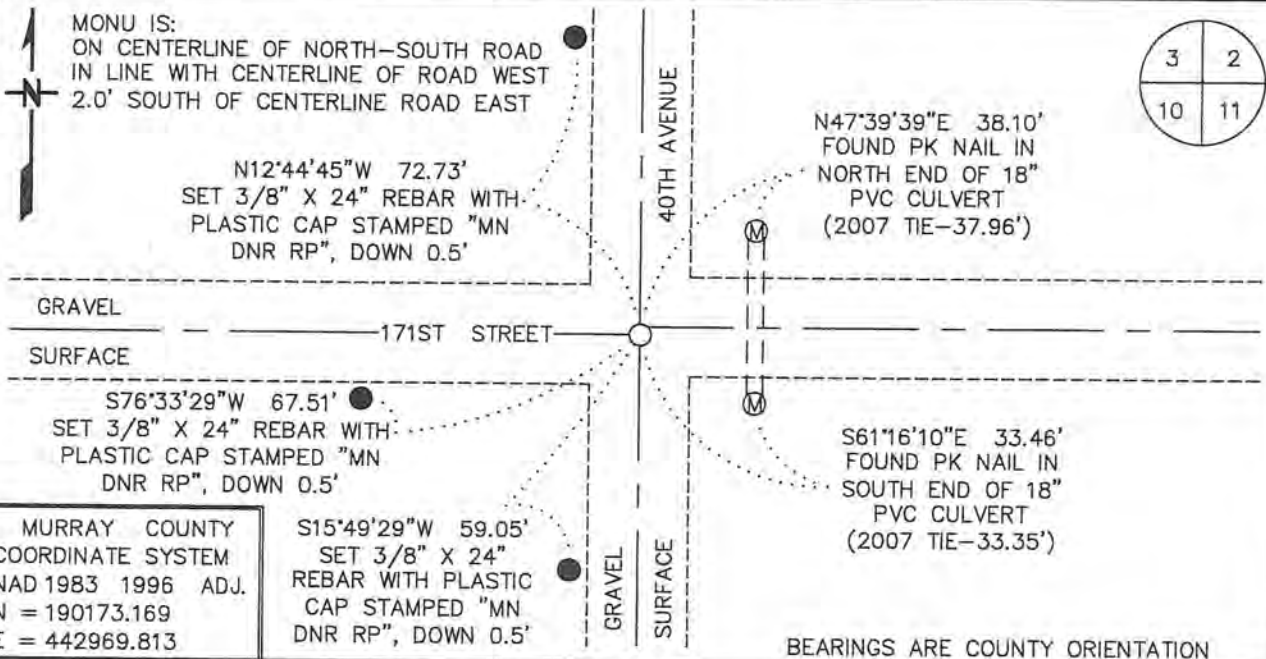


CERTIFICATE OF LOCATION OF GOVERNMENT CORNER

NORTHEAST Corner of Section 10, Township 107 N, Range 43 W
5TH Principal Meridian, State of Minnesota, County of MURRAY

At the corner location shown on the sketch:

- On _____ found a _____
DATE
- left monument as found, lowered monument, removed monument (explain)
- On 1/30/17 Placed a 3/4" X 24" REBAR WITH PLASTIC CAP STAMPED
DATE
"MN DNR LS 17003". DOWN 0.5'



Statement of evidence for this corner location is on back of this page.

FEBRUARY 2017
 WMA00754

I hereby certify that this plan, specification, or report was prepared by me or under my direct supervision and that I am a duly Licensed Land Surveyor under the laws of the State of Minnesota.

SIGNATURE Bruce W. Sheppard DATE 10/9/17 License Number 17003
 BRUCE W. SHEPPERD

Northeast Corner of Section 10, Township 107 North, Range 43 West
Page 1 of 3

The DNR Division of Lands and Minerals contacted the following for survey information:

Website - mngeo.state.mn.us for GLO plat and field notes

Website - murray-countymn.com for section and quarter section corner information

Murray County Recorder's Office

Bueltel-Moseng Land Surveying, Inc. of Marshall

Westwood Multi-Disciplined Surveying & Engineering of Eden Prairie

- 1866 U.S. General Land Office notes, obtained from mngeo.state.mn.us, show the corner marked with a post, in a mound.
- 1908 Plat Book for Cameron Township, obtained from the County Recorder's Office, shows roads east-west and north and property division south in the area of the corner.
- 1926 Plat Book for Cameron Township, obtained from the County Recorder's Office, shows an east-west road and property divisions north and south in the area of the corner.
- No Date A Surveyor's Record Book that shows Section 2, T107N, R43W, obtained from murray-countymn.com, shows a concrete monument at the corner but does not indicate if it was found or set. The following ties are shown to the corner:
- RP tack in corner fence post, northwest, 54.0 feet
 - RP tack in corner fence post, northeast, 54.5 feet
 - RP tack in corner fence post, southeast, 44.5 feet
- No Date A Surveyor's Record Book that shows Section 11, T107N, R43W, obtained from murray-countymn.com, shows a stone at the corner but does not indicate if it was found or set. The following ties are shown to the corner:
- RP tack in corner fence post, northwest, 54.0 feet
 - RP tack in corner fence post, northeast, 54.5 feet
 - RP tack in corner fence post, southeast, 44.5 feet
- 1954 September and December, the DNR conducted a survey in Sections 10 and 11 and found a concrete monument with a "+" on top, down 18 inches, at the corner. The following ties are shown to the corner:
- nail in corner fence post, northwest, 54.0 feet
 - nail in corner fence post, northeast, 54.5 feet
 - nail in corner fence post, southeast, 44.5 feet
 - 2646.0 feet from the east quarter corner of Section 10

1968 March, the DNR conducted a survey in Section 3 and the field notes state the following about this corner:

Assumed at PI N-S-E-W road, set railroad spike over nail in place. Mr. Sturges located in the SW ¼ Section 2, used caterpillar to dig for corner, dug down 3 feet to frost 10 foot diameter hole and found nothing. Frozen blue clay halted digging.

The following ties are shown to corner:

top north end of culvert, northeast, 34.50 feet
top south end of culvert, southeast, 33.75 feet

2006 March 3, A Certificate of Location of Government Corner, obtained from the County Recorder's Office, which is also on Website murray-countymn.com, signed by Daniel Bueltel, LS No 43844, shows that a 1 inch iron pipe with seal number 43844 was set down 0.2 of a foot at the corner. The following tie is shown to the corner:

at the intersection of the center line of roads north, south, east and west

The following is from the statement of evidence:

In 1866, J.W. Bishop did the original subdivision of the township.

In December, 1954, the Minnesota Conservation Department found an 18" round stone with a 'x' chiseled on it, while doing a survey in Section 11-107-43.

In April, 1968 the DNR dug for the stone and found nothing. Between 1954 and 1968 the county rebuilt the road.

On March 3, 2006 Bueltel-Moseng Land Surveying reestablished the corner by retracing the DNR survey in the Southwest Quarter of Section 11-107-43. The corner fell in the center of the intersection. We set a 1" iron pipe with seal #43844 at the corner.

The corner is shown to have the following NAD 1983 Murray County Coordinate (1996 Adjustment):

N = 190173.169

E = 442969.813

2006 March 8, A Certificate of Survey in Section 10, by Daniel Bueltel, LS No 43844, obtained from Bueltel-Moseng Land Inc., shows that a 1 inch iron pipe with seal number 43844 was found at the corner. The corner is shown:

2646.00 feet from the east quarter corner of Section 10

2643.04 feet from the north quarter corner of Section 10

Northeast Corner of Section 10, Township 107 North, Range 43 West
Page 3 of 3

2007 June 27, A Certificate of Location of Government Corner, obtained from the County Recorder's Office, which is also on Website murray-countymn.com, signed by Christopher Moehrl, PE & LS No 40853, shows that a capped iron pipe with number 43844 was found down 0.2 of a foot at the corner. The following ties are shown to the corner:

at the intersection of the center line of roads north, south, east and west
set PK nail on top north side of culvert, northeast, 37.96 feet
set PK nail on top south side of culvert, southeast, 33.35 feet
set PK nail on top south side of culvert, southwest, 33.55 feet

2016 November 1, the DNR Division of Lands and Minerals scanned the area of the corner with an electronic metal detector but no metal attraction was obtained. Then an 8 foot east-west by 10 foot north-south by 4 foot deep hole was dug with a backhoe, the center being the intersection of the center line of roads north-south-east-west. A concrete monument with a "+" on top was not found. Searched for and found record ties as shown on the sketch of reference ties.

Analysis of the above information led the DNR Division of Lands and Minerals to conclude that the concrete monument found in 1954 marks the location of the corner and that the reestablished position of the concrete monument per the 2006 retracement survey by Bueltel-Moseng Land Surveying is the best evidence of the location of the corner.

The NAD 1983 Murray County Coordinate (1996 Adjustment) per the 2006 Certificate of Location of Government Corner by Daniel Bueltel, LS No 43844, was used to set a $\frac{3}{4}$ inch by 24 inch rebar with a plastic cap stamped "MN DNR LS 17003" for the corner as shown on the sketch of reference ties.